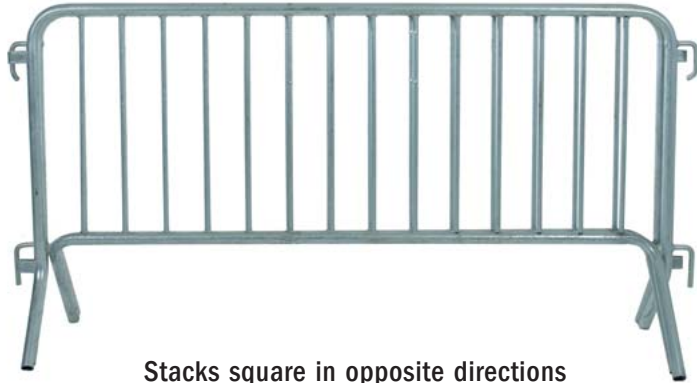
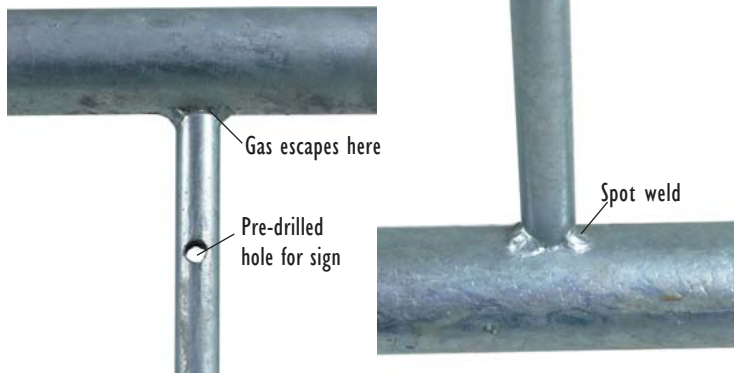


BLOCKADER® Square Stacking Barrier Economy Model



Stacks square in opposite directions



Gas escapes here

Pre-drilled hole for sign

Spot weld

Spot weld on one side allows sufficient clearance for gas to escape in the hot dip galvanizing process, enabling the zinc to flow through the tubing for superior protection.



Professional spot welds secure vertical bars to the frame. Custom hooks, such as the above old standard style hooks, are also available.



Easily make right angles and corners with the BLOCKADER® Square Stacking Barrier.



Available in all four standard hooking variations.

www.blockader.com

800-448-2647





BLOCKADER® Square Stacking Barrier Economy Model



- Stacks square in both directions
- Superior base weld – reinforced
- Available in four basic lengths
- Four hooking variations
- Best pricing
- True hot dip galvanizing

Quality and Affordability

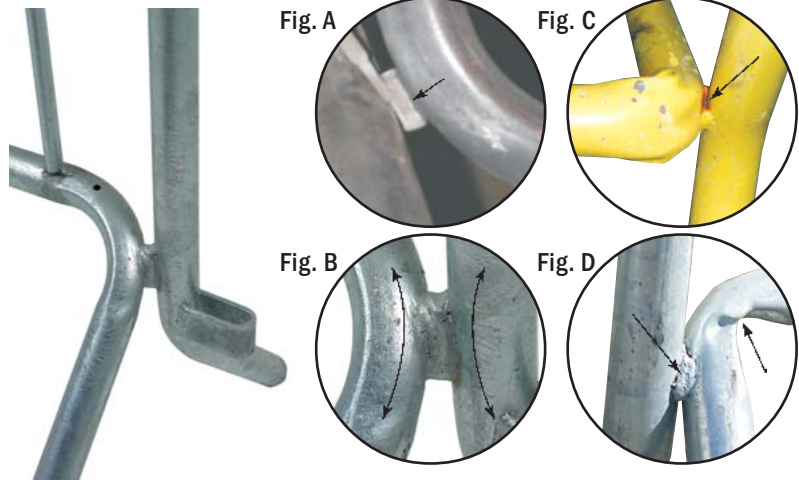
- Specifically designed to be easier on your budget
- New production technique of vertical spot welding of uprights (as opposed to drilling) results in significant price savings, while retaining the barrier's strength

The BLOCKADER® Advantage

- Superior Weld: The point where the base is welded to the frame is reinforced with a steel bar. This gives the Economy Model greater durability than competitors' frames (often held together with excess welding material which tends to crack).
- All frames are pre-drilled for standard barrier signs.
- All frames and bases are hot dip galvanized, protecting the steel from the inside and outside.

Array of Choices

Our new Economy Model is ideal for those circumstances when you don't need the classic BLOCKADER® barrier. But "economy" doesn't mean you're restricted to one size or style – you retain your choice of lengths (1-meter, 2-meter, 7-foot, 2.5-meter) and your choice of four standard hooks.



The new BLOCKADER® Square Stacking Economy Model has reinforced base welds for superior strength. A steel bar is placed between the two members of the frame (Fig. A), and is welded to both members (Fig. B). Competitor's frames rely on weak welds and deformed tubing which can rust and break (Fig. C and D).

Square stacking frames in standard 2-meter lengths with broad hook.

